

# PWS NATIONAL CONFERENCE

“Empowered By Hope, United for the Future”

## Professional Providers Day – Presenter Bios

### Jennifer Coens, OPWSA Executive Director

Jennifer obtained her Bachelor of Physical and Health Education from the University of Toronto, and Bachelor of Education from the OISE/UT, where she also played varsity basketball. She has over twenty years of experience in project management and coordination with non-profit organizations in developing and supporting the delivery of learning opportunities and resources. Jennifer has enjoyed supporting families and individuals in the OPWSA community for the past 10 years.



### Michelle Cordeiro, Co-Founder & Operations Director, FPWR Canada

Michelle is co-founder and Operations Director for the Foundation for Prader-Willi Research Canada. A dedicated advocate and community leader, Michelle has been deeply involved in supporting research and awareness for Prader-Willi syndrome (PWS) since her daughter, Julia, was diagnosed in 2005. She has played a key role in developing national initiatives, building partnerships, and organizing events that bring families, researchers, and professionals to advance PWS research and support.

Michelle lives in Richmond Hill, Ontario, with her husband, son, and daughter. Her passion and commitment continue to drive FPWR Canada's mission to accelerate research and bring hope to the Prader-Willi syndrome community.



### Brittini Kliment, Executive Vice President, Latham Centers Inc., USA

Brittini Kliment currently serves as the Executive Vice President at Latham Centers, where she has been an integral part of the organization for over 13 years. Brittini's career began as an educator, where her passion for teaching and dedication to helping students reach their full potential flourished. After several years in the classroom, she took on the role of Director of Education at Latham, where she implemented innovative programs and strategies to enhance student learning and success. In 2019, Brittini transitioned to Vice President of Admissions and Marketing, a role in which she successfully spearheaded initiatives to increase enrollment and raise awareness about the Prader-Willi syndrome (PWS) community. Her efforts played a crucial role in the agency's growth, ensuring that more families have access to vital resources and support. Brittini holds a degree in General and Special Education from Rivier College in Nashua, NH, and a master's degree in education from American International College, both of which laid a strong foundation for her career. Now serving as Executive Vice President, Brittini leads key operations and strategic initiatives, expanding the organization's impact and reach. She is also an active member of the global PWS community, regularly speaking at and attending conferences. In addition, she serves as Secretary on the Brewster Chamber of Commerce Board of Directors, where she works to support local businesses and encourage community involvement.



---

### **Patrice Carroll, LICSW, Ph.D., Director of PWS Services, Latham Centers Inc., USA**

Patrice Carroll, DSW, LICSW, is the director of PWS services at Latham Centers in Massachusetts, USA. Patrice received her MSW from Simmons College, Boston, MA, in 2008. Patrice is a Board of Trustees and member of the Professional Providers Caregivers Board through IPSWO and Caregiver's Advisory Board through PWSAUSA and has over 25 years of experience working with children and adults diagnosed with PWS. In addition to her experience with developing person-centered programming for people with PWS, she has specialized in the multi-modal management of skin and rectal picking using intensive, non-contingent, sensory stimulation.



---

### **Lynn Garrick, Medical/Research Coordinator, PWSA | USA**

Lynn and her family live in Cottage Grove, MN. She is the mother of 5 children, including her youngest son, who has Prader-Willi syndrome. She has been the Nurse and Program Director with AME Community Services, Inc., a residential provider serving adults and children with Prader-Willi syndrome since 2007. She is a board member of IPWSO, their professional providers and caregivers board, and the Minnesota PWS chapter. PWSA | USA has been a significant resource since the birth of her son, and she is honored to help the community through her personal and professional knowledge. In her personal life, Lynn enjoys spending time outdoors with her family, reading, and gardening.



---

### **Katrina Kozak, Vice President, Workforce Development, Latham Centers Inc., USA**

Katrina Kozak currently serves as the Vice President of Workforce Development and has been a dedicated employee since 2013. Throughout her tenure, Katrina has worked in a range of departments including development, admissions, marketing, outreach, and workforce development. Katrina served on the Cape Cod Young Professionals Board of Directors from 2016-2020 and in 2017 she was the youngest recipient of the Cape Plymouth and Business 40 Under 40 Award. Katrina attended Clark University from 2008 to 2013, where she received her Bachelor of Arts in Communication and Culture and Master of Science in Professional Communication (MSPC).

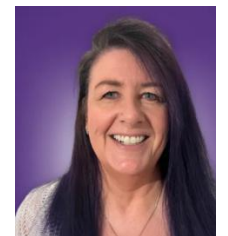
With a deep commitment to empowering staff through innovative workforce solutions and an eye on company culture, Katrina has been instrumental in shaping the agency's strategic vision and driving its mission forward. Specifically, her areas of focus include workforce housing solutions, project management, wrap-around staff support and training opportunities, and interdepartmental company culture initiatives.



---

### **Kim Tula, Senior Family Support Counselor and Trainer, PWSA | USA**

Kim has been a Family Support Counselor with PWSA | USA since 2019. Kim holds a Master's in Human Services with a specialization in Multidisciplinary Human Services and a Bachelor's Degree in Psychology and Sociology. Kim is also a Certified Social Worker in Wisconsin. She had worked in a residential care setting since 1990, working with a wide variety of client populations, including children and adults diagnosed with Prader-Willi syndrome and with intensive treatment needs. Prior to joining PWSA | USA as a Family Support Counselor and Trainer, Kim held positions as a Direct Care Staff, Behavior Specialist, Clinical Coordinator, and a Behavior Services Coordinator. Kim has also been involved in the Youth and Adult Programs at the National PWSA conference since 2011. In 2015, she was tasked with organizing these programs. In 2020 Kim became the Director of the PWS Youth, Adult, and Sibling Camps for the National PWSA | USA convention. Kim loves working with and supporting individuals with PWS and their families. In her free time she enjoys spending time with her husband and daughter, horseback riding, and gardening.



## SPONSORS

Thank you to our sponsors for supporting the 2025 PWS National Conference.

